

AMY LARKIN, PharmD; JULIE SCHRAND; ANNE LE, PharmD: Medscape Education, New York, NY

## BACKGROUND

We sought to measure the impact of a live symposium at ACOG followed by an enduring activity on Medscape related to real-time continuous glucose monitoring (rtCGM) use in pregnant patients.



## METHODS

PRE-ASSESSMENT



OB/GYNs  
(n = Live: 61,  
Enduring: 3595)



POST-ASSESSMENT



OB/GYNs  
(n = Live: 61,  
Enduring: 3595)

Pre and post questions assessed changes in knowledge and confidence. Absolute differences were calculated for the live activity. For the enduring, completers of all pre and post questions were linked and analyzed.

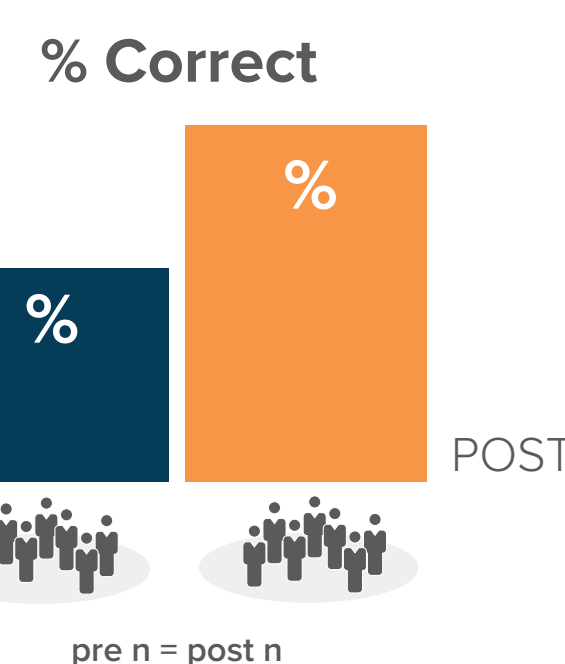
## How to Read the Linked Learner Assessment

### OUTCOMES COMPLETERS

Each individual completed BOTH the pre and post-education questions  
SAME individuals pre and post-education

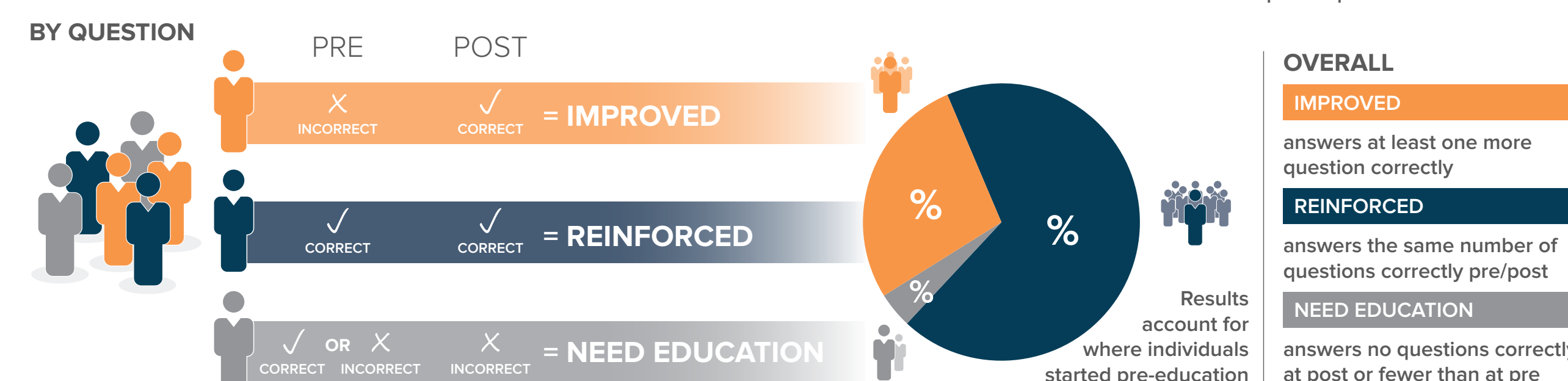


SUMMARY STATISTICS FOR PARTICIPANTS WHO PROVIDE COMPLETE DATA



### LINKED LEARNER

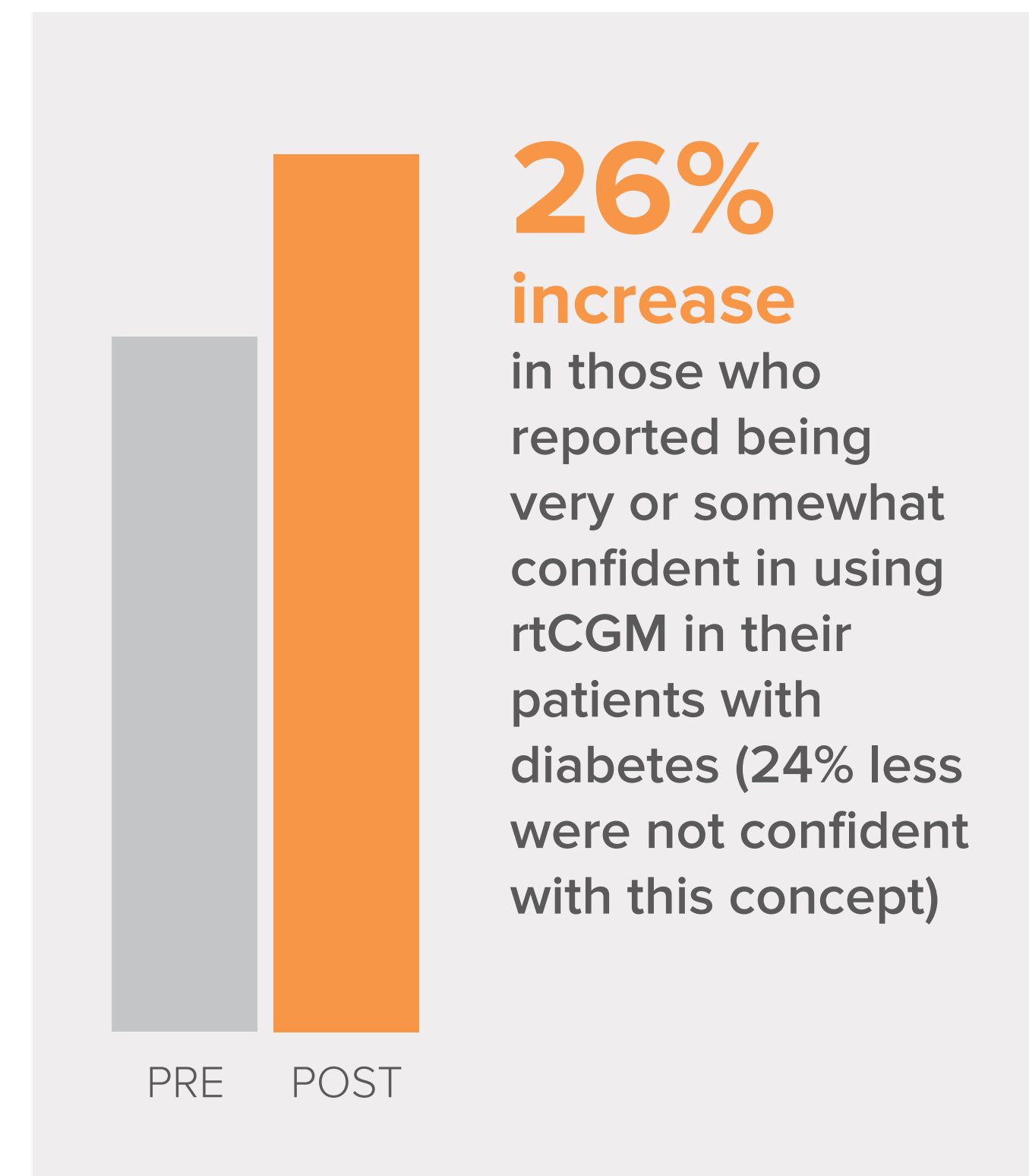
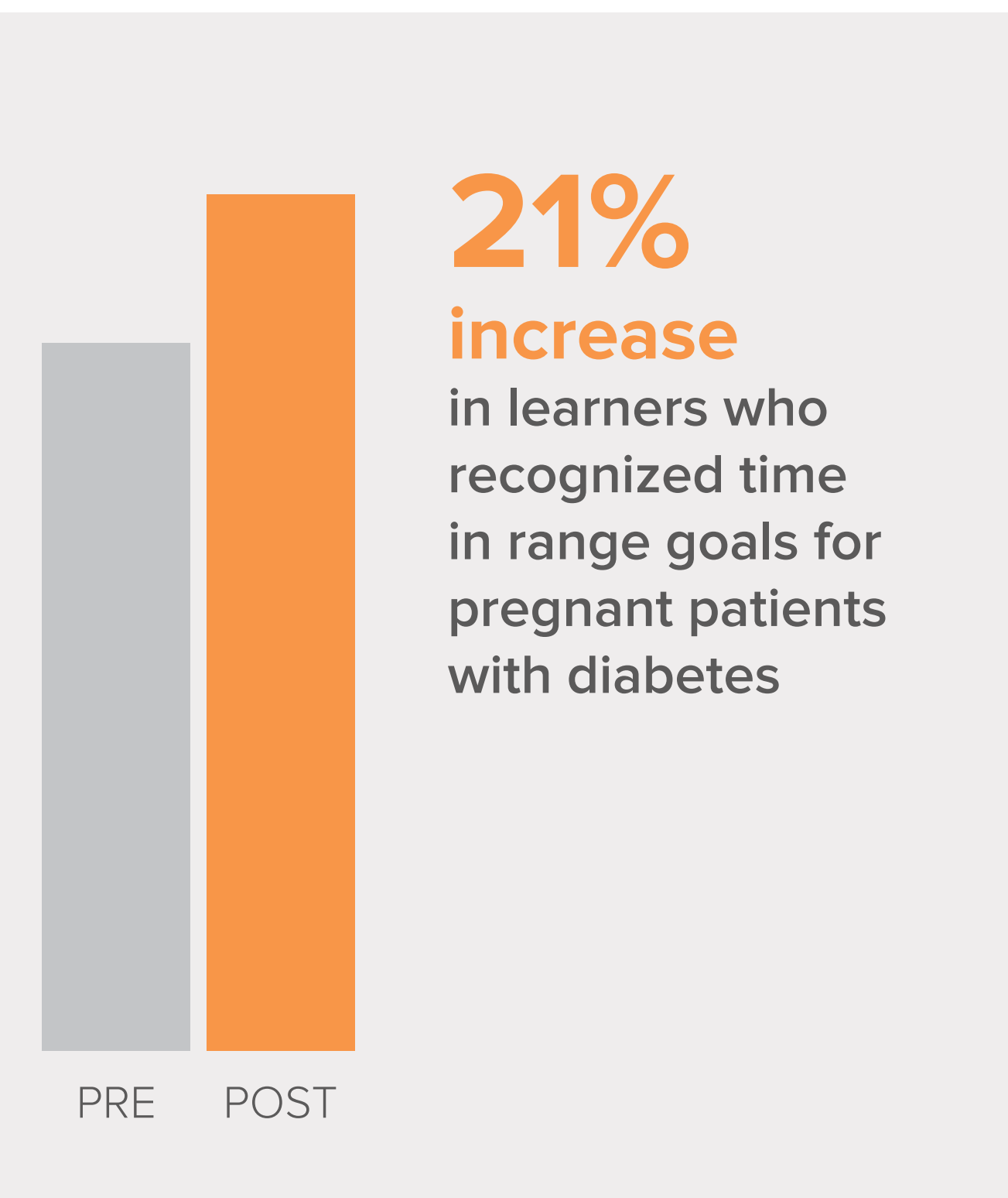
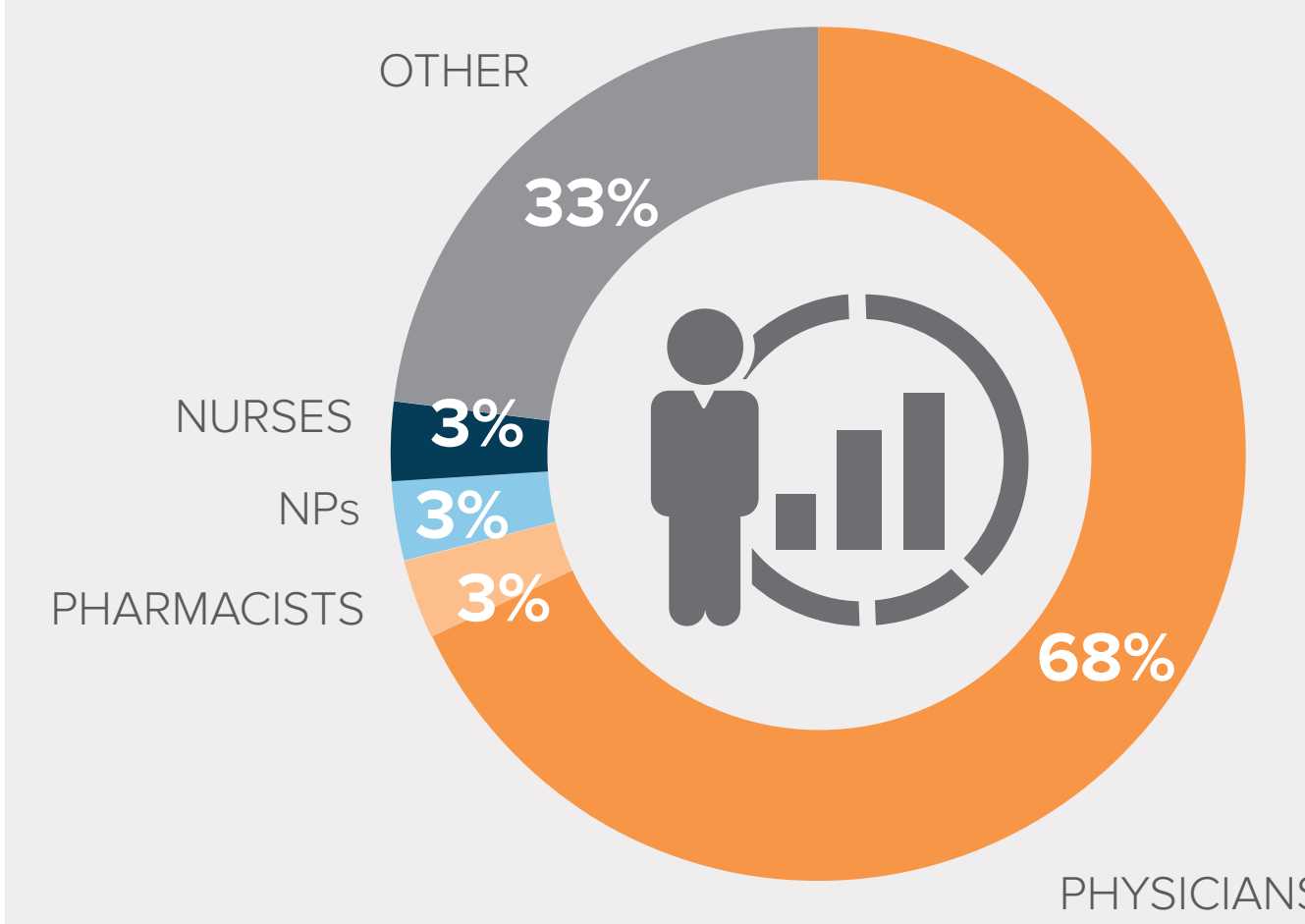
Each individual tracked pre and post-education  
Learners serve as their own controls



## RESULTS

LIVE PARTICIPANTS (n = 61)

### DEMOGRAPHICS



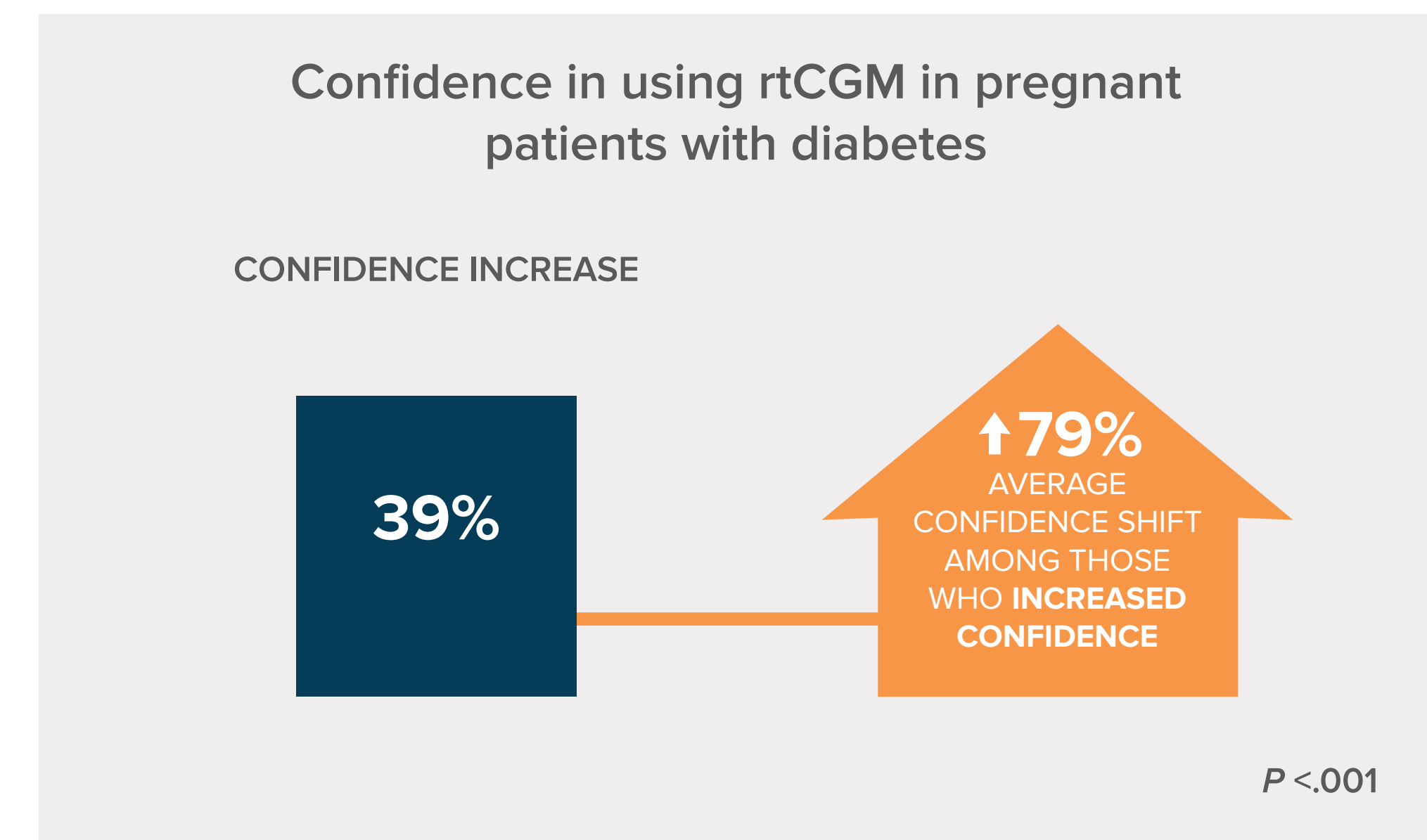
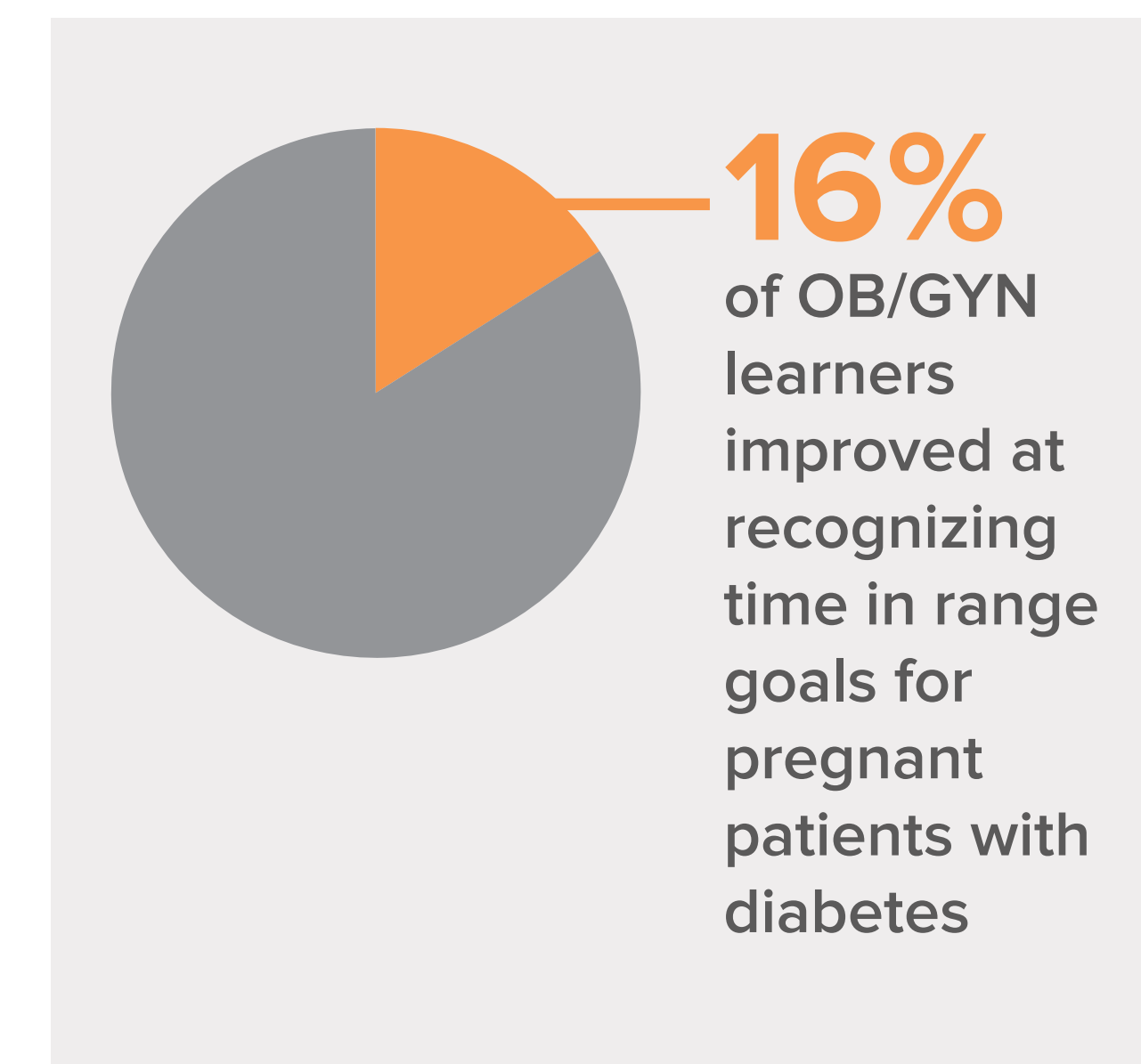
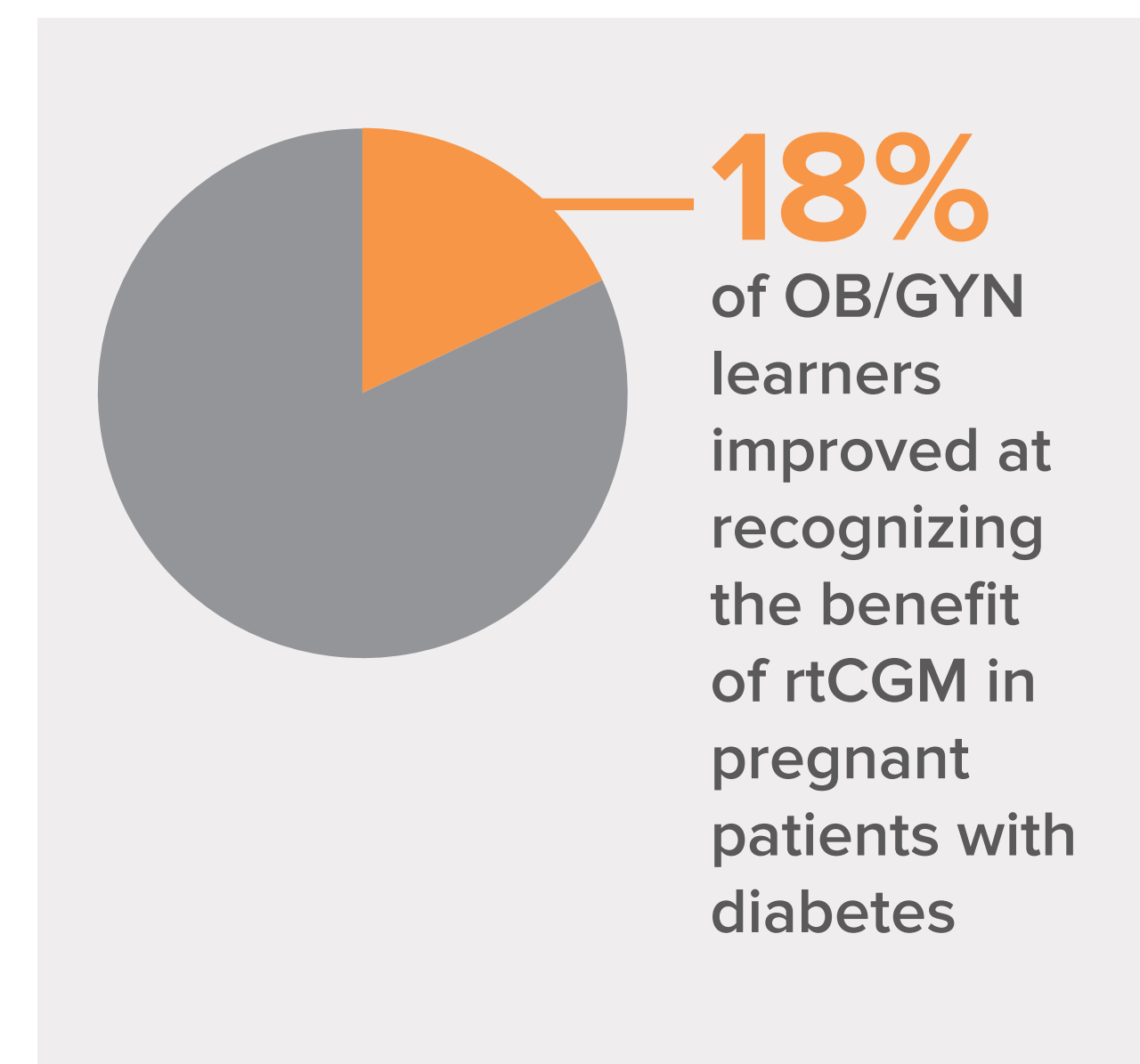
ENDURING LEARNERS

LEARNERS TO DATE (March, 2023):

4,900

COMPLETERS OF ALL QUESTIONS:

83



## CONCLUSIONS

The outcomes gathered in this assessment are a strong indicator that a live, in-person CME symposium followed by an online enduring activity is successful at improving knowledge and confidence related to rtCGM use in pregnant patients with diabetes, and may promote improvements in clinical practice.

## ACKNOWLEDGEMENTS

Developed through an independent educational grant from Dexcom.

For more information, contact Amy Larkin, PharmD, Senior Director, Clinical Strategy, Medscape, LLC, at [alarkin@medscape.net](mailto:alarkin@medscape.net).



Scan here to view this poster online.